
We are pleased to announce the following changes to **Z-Flex® Direct Vent DVI** product offering.

The following new items have been added:

- **Extreme Weather Cap for Factory Built Chimney**



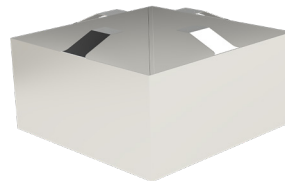
2DVCLTERM3(3,4)FB

- **Wind Guard Extreme Weather Cap**



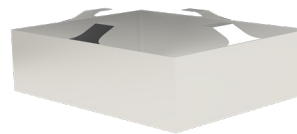
2DVCLTERMWG

- **Wind Guard Decorative Cap***



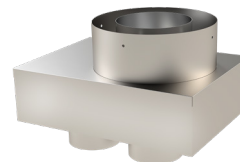
2DVCLTERMWGP

- **Wind Guard Low Profile Cap***



2DVCLTERMWGLP

- **Adaptor Coaxial to Colinear**



2DVACCL3346

*Wind Guards are recommended where sustained winds are typical (~40mph)

Visit [DVI Dimensional Data](#) for additional information.

Z-Flex® US, a Novaflex Group Company

Canada: 452 Attwell Drive, Etobicoke, ON M9W 5C3 tel: 416.679.0045 • fax: 416.679.0051
USA: 20 Commerce Park North, Bedford, New Hampshire tel: 603.669.5136 800.654.5600 • fax: 603.669.0309

04.2025